



GAT MONTHLY MEMBERSHIP PROGRESS REPORT

Results as of: 9/30/2022

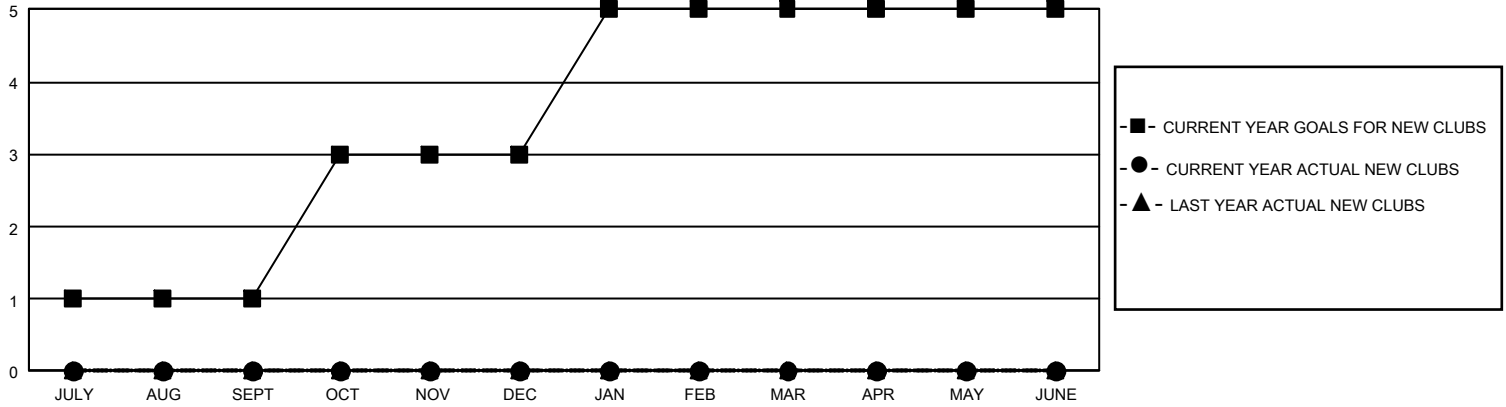
GMT Constitutional Area 2, Group C

REPORT DOES NOT INCLUDE CLUBS IN UNDISTRICTED AREAS.

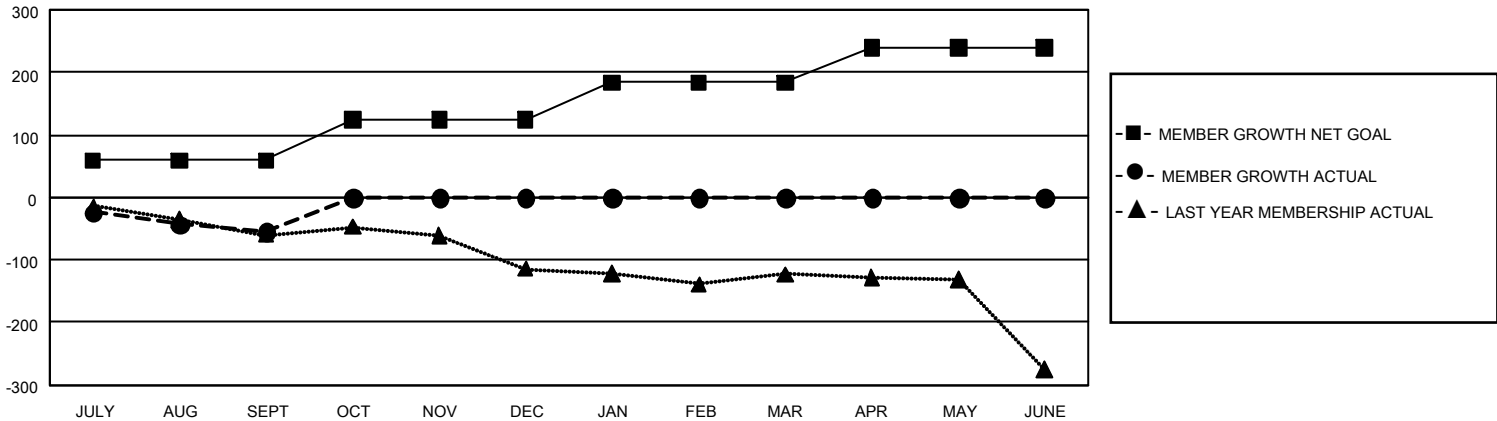
Clubs			
RESULTS FOR 2022-2023			
QUARTER	NEW CLUB GOAL	NEW CLUBS	DROPPED CLUBS
JULY/AUG/SEPT	3	0	0
OCT/NOV/DEC	6	0	0
JAN/FEB/MAR	6	0	0
APR/MAY/JUNE	0	0	0

Members			
RESULTS FOR 2022-2023			
QUARTER	MEMBER GROWTH NET GOAL	MEMBER GROWTH ACTUAL	DROPPED MEMBERS ACTUAL (including transfers)
JULY/AUG/SEPT	59	28	77
OCT/NOV/DEC	65	0	0
JAN/FEB/MAR	60	0	0
APR/MAY/JUNE	55	0	0

GOALS AND ACTUAL NEW CLUBS CUMULATIVE



GOALS AND ACTUAL MEMBERS CUMULATIVE



DROPPED CLUBS: 0	12 CLUBS OF 159 ADDED 1 OR MORE NEW MEMBERS	<u>GENDER DISTRIBUTION</u>	
		MALE	2,230 (66.23%)
<u>DROPPED MEMBERS</u>		FEMALE	1,137 (33.77%)
		NON BINARY	0 (0.00%)
DECEASED	9	PREFER NOT TO ANSWER	0 (0.00%)
CLUB CANCELLED	0	TOTAL FAMILY UNIT MEMBERS	627
OTHER	68	FAMILY MEMBERS PAYING HALF DUES	320
TOTAL	77	CLICK HERE FOR CUMULATIVE MEMBERSHIP DATA	